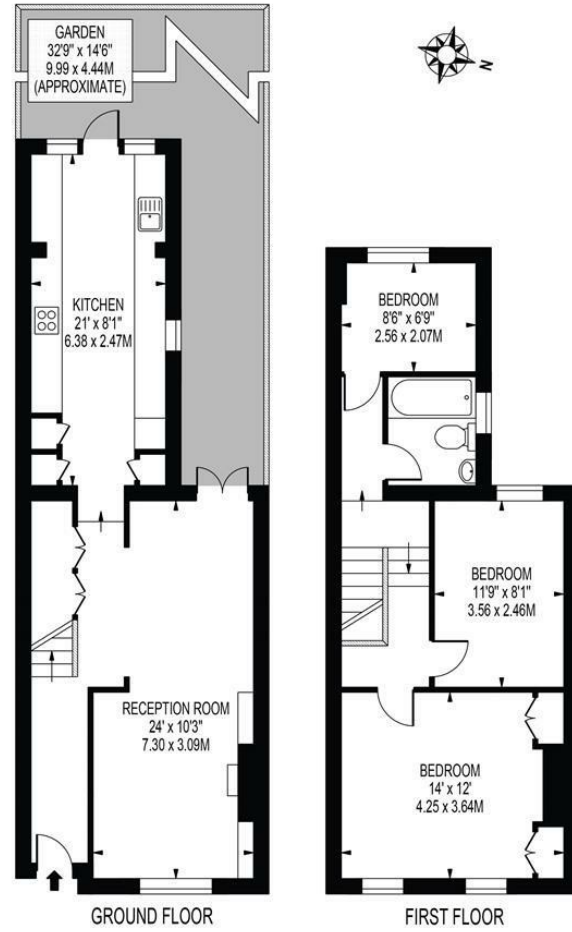
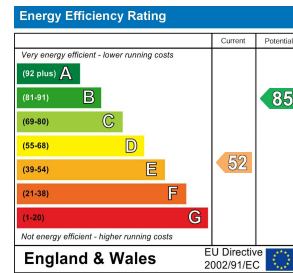


HAYDONS ROAD
 APPROXIMATE GROSS INTERNAL FLOOR AREA: 987 SQ FT - 91.72 SQ M



THIS FLOOR PLAN SHOULD BE USED AS A GENERAL OUTLINE FOR GUIDANCE ONLY AND DOES NOT CONSTITUTE IN WHOLE OR IN PART AN OFFER OR CONTRACT. ANY INTENDING PURCHASER OR LESSEE SHOULD SATISFY THEMSELVES BY INSPECTION, SEARCHES, ENQUIRIES AND FULL SURVEY AS TO THE CORRECTNESS OF EACH STATEMENT. ANY AREAS, MEASUREMENTS OR DISTANCES QUOTED ARE APPROXIMATE AND SHOULD NOT BE USED TO VALUE A PROPERTY OR BE THE BASIS OF ANY SALE OR LET.



Haydons Road Wimbledon, SW19 1AE



£2,650 Per Month:

BEAUTIFUL THREE BEDROOM HOUSE FULL OF PERIOD FEATURES,
 MATCHED WITH A CONTEMPORARY FEEL

A BEAUTIFUL, three bedroom Victorian family home with PERIOD FEATURES. Located within easy reach of both Wimbledon Town Centre and Train Station and a short walk to multiple popular PRIMARY SCHOOLS, including Priory, Trinity, St Marys and Garfield. This wonderful home features a modern extended kitchen with under floor heating and direct access to the West facing garden, spacious through lounge/diner with fireplace and PLANTATION SHUTTERS. Upstairs are three bedrooms, master with fitted wardrobes, and the family bathroom. EPC band E. Council tax band D.



reception	23'10x10'3
kitchen	21'4x8'2
bedroom	13'11x11'11
bedroom	11'10x8'2



SPECIFICATION:

- Beautiful Victorian Family Home With Period Features
- Modern Kitchen
- West Facing Garden
- View Over Park
- 0.6 Miles to South Wimbledon Tube
- First Months Rent in Advance
- Five Weeks Security Deposit
- Holding Deposit = One Weeks Rent
- EPC E
- Council Tax Band - D

